

# 2 BEDROOM PREMIUM

UPDATED ON: 10 Mar 2026

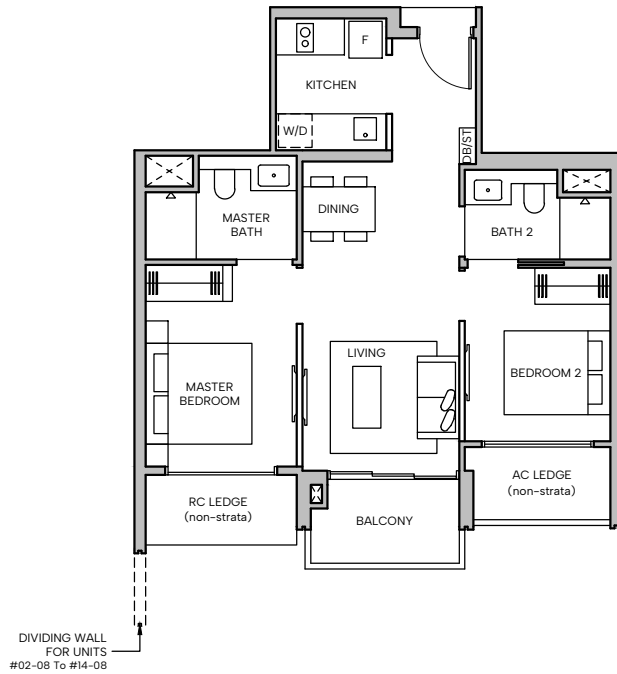
## Type B1a

60 sqm (646 sq ft)

Block 20 #02-09 to #23-09

\*Mirrored Units

Block 18 #02-08\* to #14-08\*

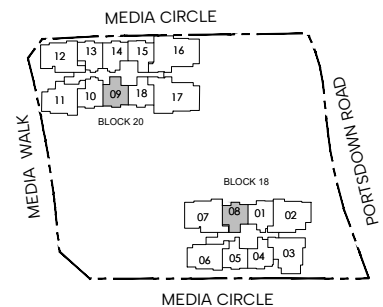


### LEGEND

F FRIDGE W/D WASHER CUM DRYER DB DISTRIBUTION BOARD ST STORE AC AIR-CONDITIONER  
RC REINFORCED CONCRETE



SCALE



KEY PLAN  
NOT TO SCALE

DISCLAIMER: Area includes balcony where applicable, and excludes among others, the Air-Conditioner (AC) ledge, airwell, Reinforced Concrete (RC) Ledge and Services Voids. Please refer to the key plan for orientation. All floor plans are approximate measurements only and are subject to government re-survey. Balconies are not to be enclosed except with a balcony screen which has been approved and complies with the Competent Authority's guidelines. The cost of screen and installation shall be borne by the purchaser. For an illustration of the approved balcony screen, please refer to Annex A of this brochure.

# 2 BEDROOM PREMIUM

UPDATED ON: 10 Mar 2026

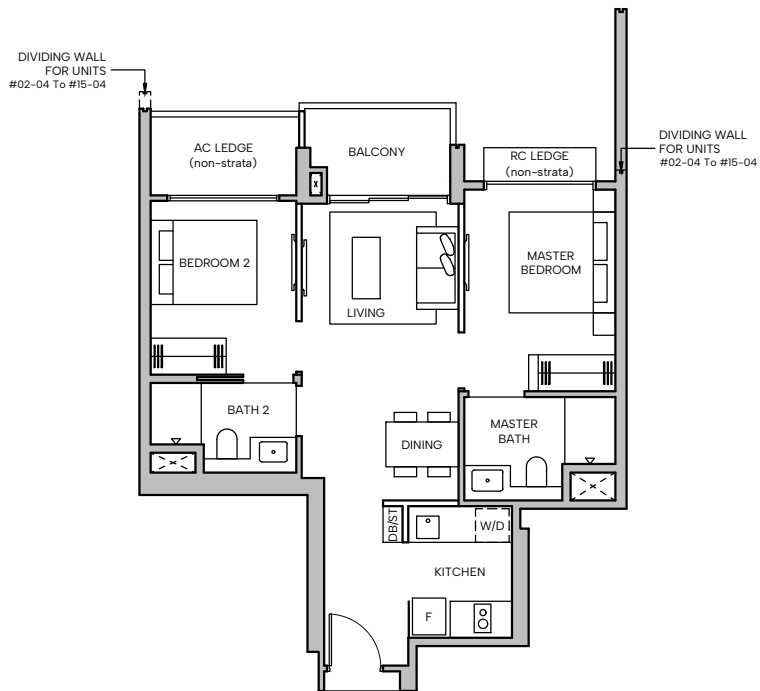
## Type B1b

60 sqm (646 sq ft)

Block 20 #02-15 to #22-15

\*Mirrored Units

Block 18 #02-04\* to #15-04\*

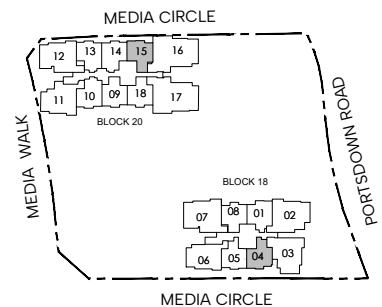


### LEGEND

**F** FRIDGE **W/D** WASHER CUM DRYER **DB** DISTRIBUTION BOARD **ST** STORE **AC** AIR-CONDITIONER  
**RC** REINFORCED CONCRETE



SCALE



**KEY PLAN**  
NOT TO SCALE

**DISCLAIMER:** Area includes balcony where applicable, and excludes among others, the Air-Conditioner (AC) ledge, airwell, Reinforced Concrete (RC) Ledge and Services Voids. Please refer to the key plan for orientation. All floor plans are approximate measurements only and are subject to government re-survey. Balconies are not to be enclosed except with a balcony screen which has been approved and complies with the Competent Authority's guidelines. The cost of screen and installation shall be borne by the purchaser. For an illustration of the approved balcony screen, please refer to Annex A of this brochure.

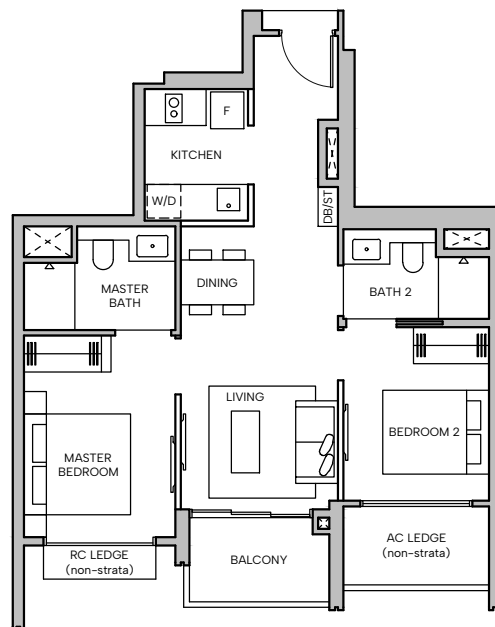
# 2 BEDROOM PREMIUM

UPDATED ON: 10 Mar 2026

## Type B1c

60 sqm (646 sq ft)

Block 18 #02-05 to #15-05

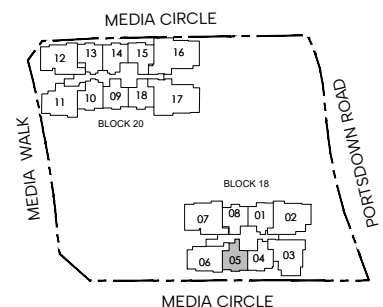


### LEGEND

**F** FRIDGE **W/D** WASHER CUM DRYER **DB** DISTRIBUTION BOARD **ST** STORE **AC** AIR-CONDITIONER  
**RC** REINFORCED CONCRETE



SCALE



**KEY PLAN**  
NOT TO SCALE

**DISCLAIMER:** Area includes balcony where applicable, and excludes among others, the Air-Conditioner (AC) ledge, airwell, Reinforced Concrete (RC) Ledge and Services Voids. Please refer to the key plan for orientation. All floor plans are approximate measurements only and are subject to government re-survey. Balconies are not to be enclosed except with a balcony screen which has been approved and complies with the Competent Authority's guidelines. The cost of screen and installation shall be borne by the purchaser. For an illustration of the approved balcony screen, please refer to Annex A of this brochure.

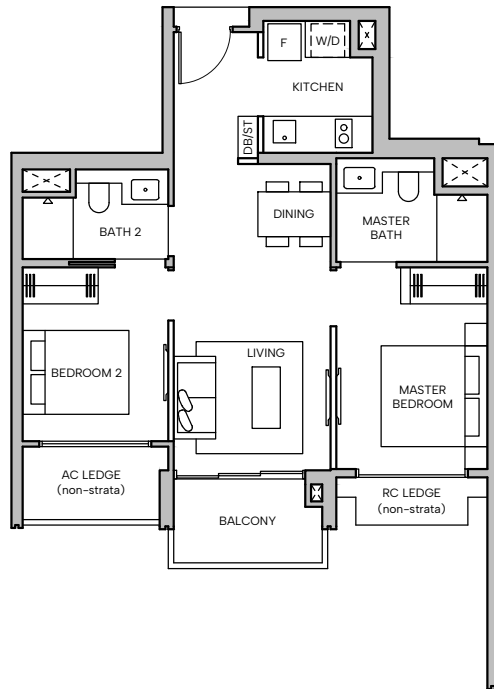
# 2 BEDROOM PREMIUM

UPDATED ON: 10 Mar 2026

## Type B1d

60 sqm (646 sq ft)

Block 20 #02-18 to #22-18

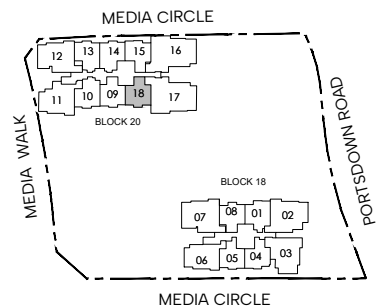


### LEGEND

**F** FRIDGE **W/D** WASHER CUM DRYER **DB** DISTRIBUTION BOARD **ST** STORE **AC** AIR-CONDITIONER  
**RC** REINFORCED CONCRETE



SCALE



**KEY PLAN**  
 NOT TO SCALE

**DISCLAIMER:** Area includes balcony where applicable, and excludes among others, the Air-Conditioner (AC) ledge, airwell, Reinforced Concrete (RC) Ledge and Services Voids. Please refer to the key plan for orientation. All floor plans are approximate measurements only and are subject to government re-survey. Balconies are not to be enclosed except with a balcony screen which has been approved and complies with the Competent Authority's guidelines. The cost of screen and installation shall be borne by the purchaser. For an illustration of the approved balcony screen, please refer to Annex A of this brochure.

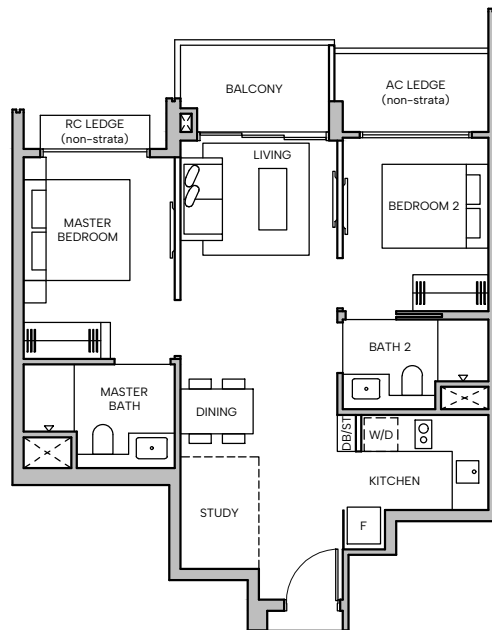
# 2 BEDROOM PREMIUM + STUDY

UPDATED ON: 10 Mar 2026

## Type B2

64 sqm (689 sq ft)

Block 18 #02-01 to #14-01

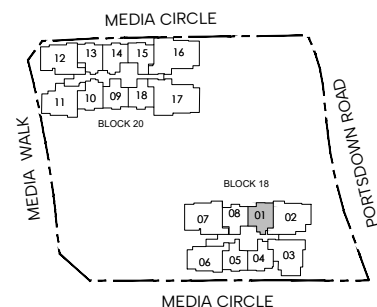


### LEGEND

**F** FRIDGE **W/D** WASHER CUM DRYER **DB** DISTRIBUTION BOARD **ST** STORE **AC** AIR-CONDITIONER  
**RC** REINFORCED CONCRETE



SCALE



**KEY PLAN**  
 NOT TO SCALE

**DISCLAIMER:** Area includes balcony where applicable, and excludes among others, the Air-Conditioner (AC) ledge, airwell, Reinforced Concrete (RC) Ledge and Services Voids. Please refer to the key plan for orientation. All floor plans are approximate measurements only and are subject to government re-survey. Balconies are not to be enclosed except with a balcony screen which has been approved and complies with the Competent Authority's guidelines. The cost of screen and installation shall be borne by the purchaser. For an illustration of the approved balcony screen, please refer to Annex A of this brochure.

# 2 BEDROOM PREMIUM + STUDY

UPDATED ON: 10 Mar 2026

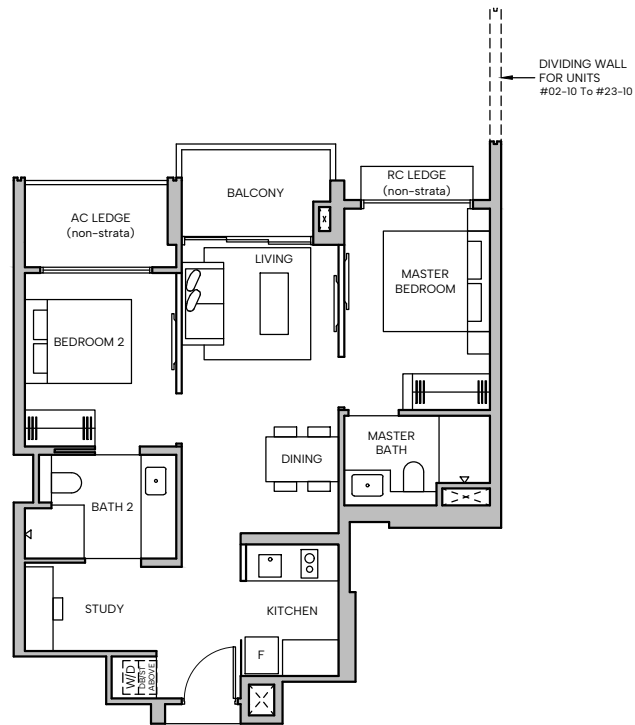
## Type B3

64 sqm (689 sq ft)

Block 20 #02-10 to #23-10  
#02-14 to #23-14

\*Mirrored Units

Block 20 #02-13\* to #22-13\*

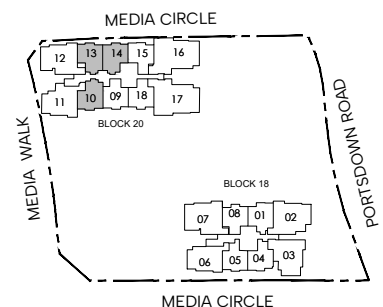


### LEGEND

F FRIDGE W/D WASHER CUM DRYER DB DISTRIBUTION BOARD ST STORE AC AIR-CONDITIONER  
RC REINFORCED CONCRETE



SCALE



KEY PLAN  
NOT TO SCALE

DISCLAIMER: Area includes balcony where applicable, and excludes among others, the Air-Conditioner (AC) ledge, airwell, Reinforced Concrete (RC) Ledge and Services Voids. Please refer to the key plan for orientation. All floor plans are approximate measurements only and are subject to government re-survey. Balconies are not to be enclosed except with a balcony screen which has been approved and complies with the Competent Authority's guidelines. The cost of screen and installation shall be borne by the purchaser. For an illustration of the approved balcony screen, please refer to Annex A of this brochure.

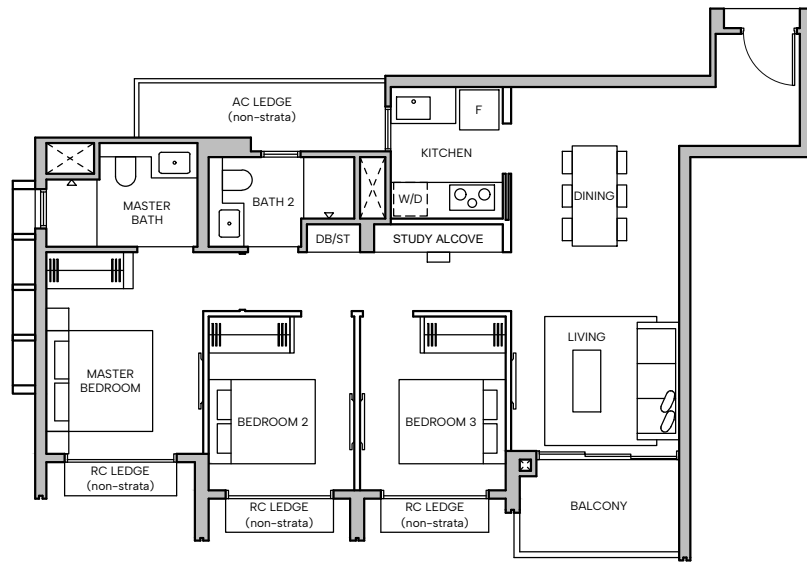
# 3 BEDROOM DELUXE

UPDATED ON: 10 Mar 2026

## Type C1

83 sqm (893 sq ft)

Block 18 #02-06 to #15-06

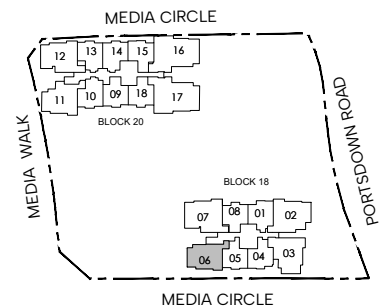


### LEGEND

**F** FRIDGE **W/D** WASHER CUM DRYER **DB** DISTRIBUTION BOARD **ST** STORE **AC** AIR-CONDITIONER  
**RC** REINFORCED CONCRETE



SCALE



**KEY PLAN**  
 NOT TO SCALE

**DISCLAIMER:** Area includes balcony where applicable, and excludes among others, the Air-Conditioner (AC) ledge, airwell, Reinforced Concrete (RC) Ledge and Services Voids. Please refer to the key plan for orientation. All floor plans are approximate measurements only and are subject to government re-survey. Balconies are not to be enclosed except with a balcony screen which has been approved and complies with the Competent Authority's guidelines. The cost of screen and installation shall be borne by the purchaser. For an illustration of the approved balcony screen, please refer to Annex A of this brochure.

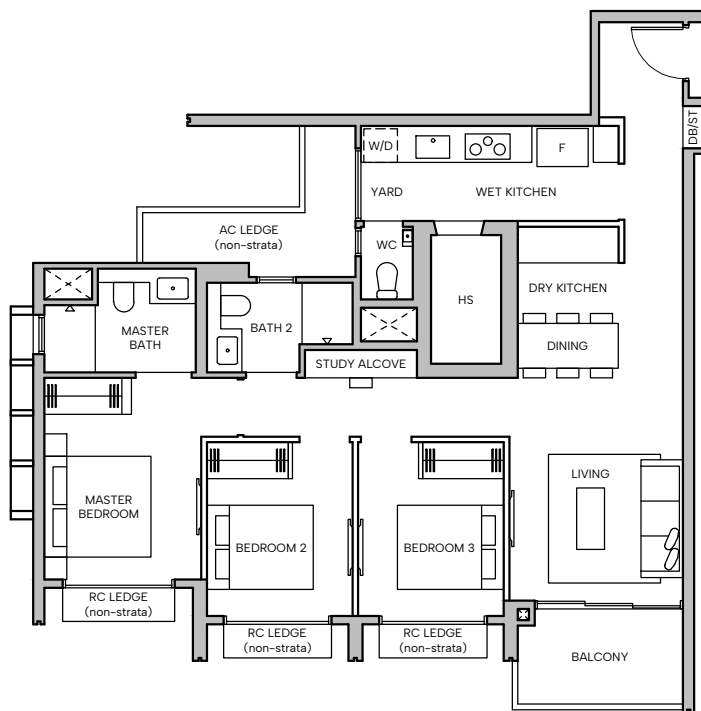
# 3 BEDROOM PREMIUM

UPDATED ON: 10 Mar 2026

## Type C2

94 sqm (1012 sq ft)

Block 18 #02-03 to #15-03

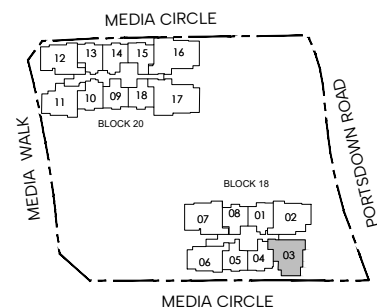


### LEGEND

**F** FRIDGE **W/D** WASHER CUM DRYER **DB** DISTRIBUTION BOARD **ST** STORE **AC** AIR-CONDITIONER  
**RC** REINFORCED CONCRETE **HS** HOUSEHOLD SHELTER **WC** WATER CLOSET



SCALE



**KEY PLAN**  
 NOT TO SCALE

**DISCLAIMER:** Area includes balcony where applicable, and excludes among others, the Air-Conditioner (AC) ledge, airwell, Reinforced Concrete (RC) Ledge and Services Voids. Please refer to the key plan for orientation. All floor plans are approximate measurements only and are subject to government re-survey. Balconies are not to be enclosed except with a balcony screen which has been approved and complies with the Competent Authority's guidelines. The cost of screen and installation shall be borne by the purchaser. For an illustration of the approved balcony screen, please refer to Annex A of this brochure.

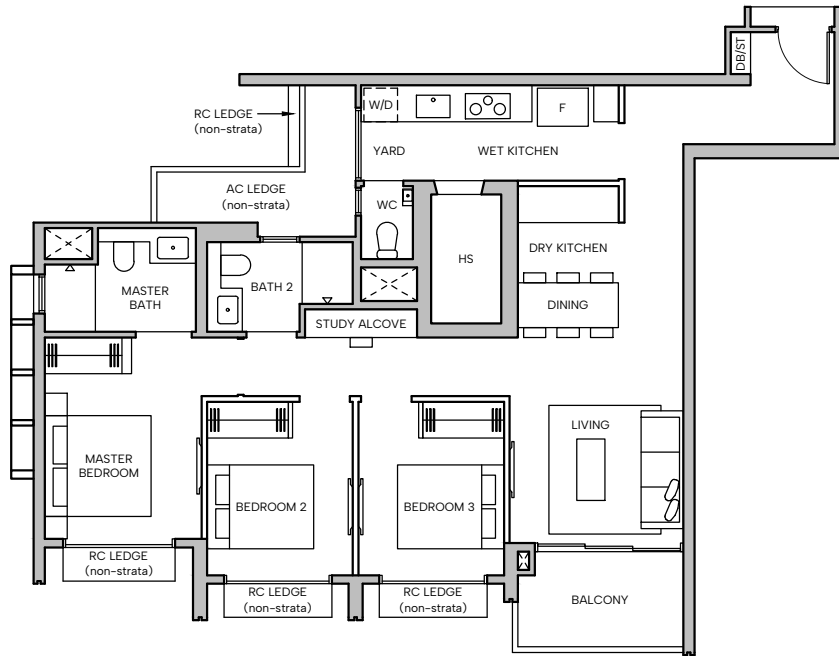
# 3 BEDROOM PREMIUM

UPDATED ON: 25 Mar 2026

## Type C3

95 sqm (1023 sq ft)

Block 20 #02-11 to #23-11

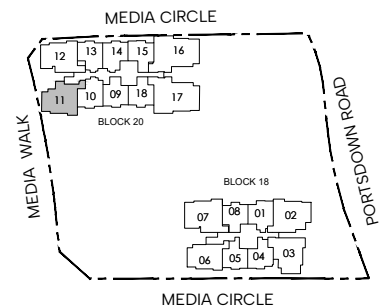


### LEGEND

F FRIDGE W/D WASHER CUM DRYER DB DISTRIBUTION BOARD ST STORE AC AIR-CONDITIONER  
 RC REINFORCED CONCRETE HS HOUSEHOLD SHELTER WC WATER CLOSET



SCALE



KEY PLAN  
 NOT TO SCALE

DISCLAIMER: Area includes balcony where applicable, and excludes among others, the Air-Conditioner (AC) ledge, airwell, Reinforced Concrete (RC) Ledge and Services Voids. Please refer to the key plan for orientation. All floor plans are approximate measurements only and are subject to government re-survey. Balconies are not to be enclosed except with a balcony screen which has been approved and complies with the Competent Authority's guidelines. The cost of screen and installation shall be borne by the purchaser. For an illustration of the approved balcony screen, please refer to Annex A of this brochure.

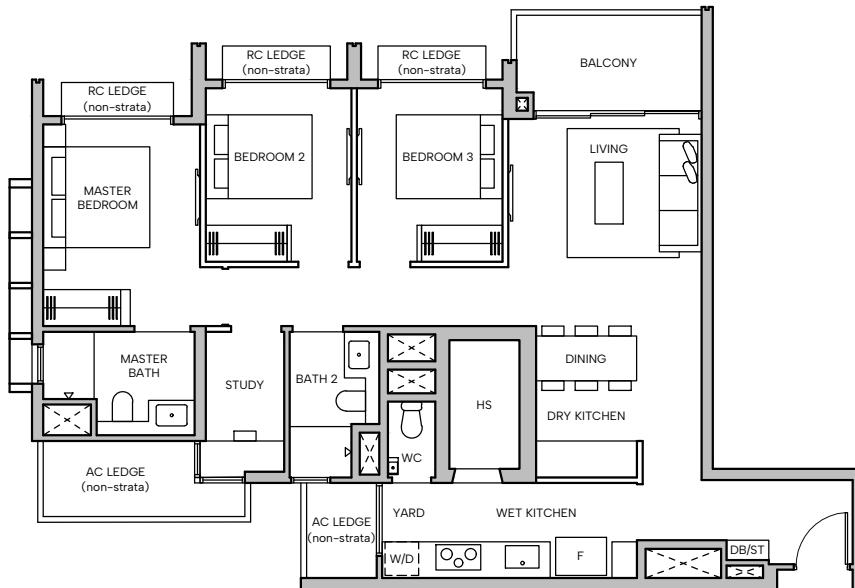
# 3 BEDROOM PREMIUM + STUDY

UPDATED ON: 25 Mar 2026

## Type C4

98 sqm (1055 sq ft)

Block 20 #02-12 to #22-12

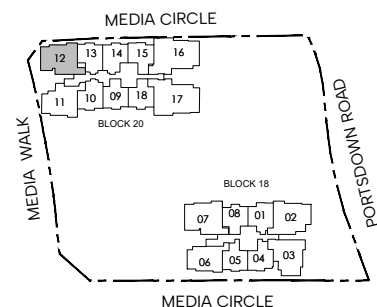


### LEGEND

F FRIDGE W/D WASHER CUM DRYER DB DISTRIBUTION BOARD ST STORE AC AIR-CONDITIONER  
 RC REINFORCED CONCRETE HS HOUSEHOLD SHELTER WC WATER CLOSET



SCALE



KEY PLAN  
 NOT TO SCALE

DISCLAIMER: Area includes balcony where applicable, and excludes among others, the Air-Conditioner (AC) ledge, airwell, Reinforced Concrete (RC) Ledge and Services Voids. Please refer to the key plan for orientation. All floor plans are approximate measurements only and are subject to government re-survey. Balconies are not to be enclosed except with a balcony screen which has been approved and complies with the Competent Authority's guidelines. The cost of screen and installation shall be borne by the purchaser. For an illustration of the approved balcony screen, please refer to Annex A of this brochure.

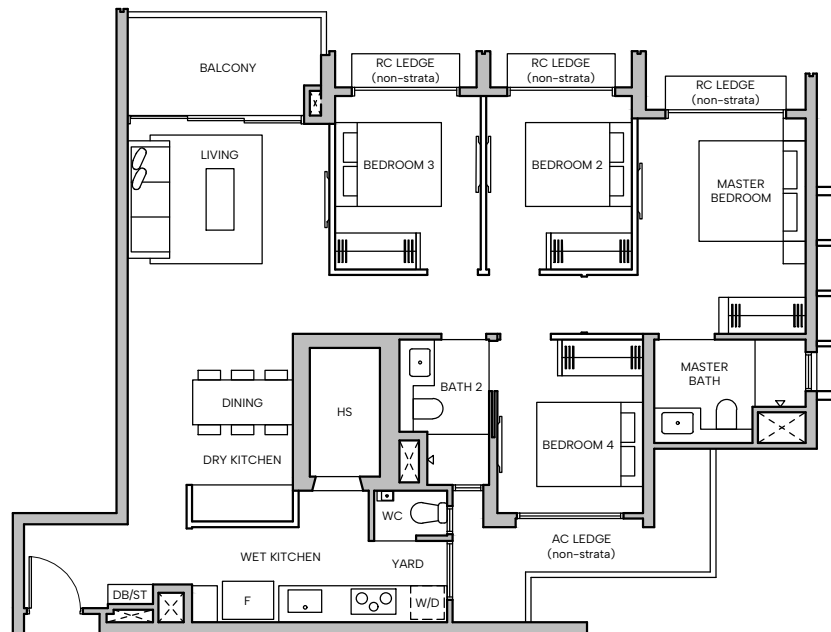
# 4 BEDROOM PREMIUM

UPDATED ON: 25 Mar 2026

## Type D1a

107 sqm (1152 sq ft)

Block 18 #02-02 to #14-02

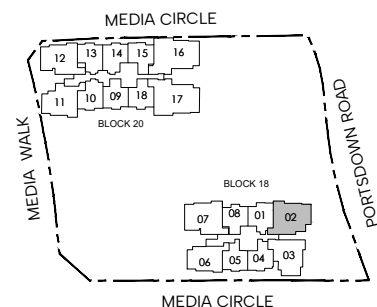


### LEGEND

F FRIDGE W/D WASHER CUM DRYER DB DISTRIBUTION BOARD ST STORE AC AIR-CONDITIONER  
 RC REINFORCED CONCRETE HS HOUSEHOLD SHELTER WC WATER CLOSET



SCALE



KEY PLAN  
 NOT TO SCALE

DISCLAIMER: Area includes balcony where applicable, and excludes among others, the Air-Conditioner (AC) ledge, airwell, Reinforced Concrete (RC) Ledge and Services Voids. Please refer to the key plan for orientation. All floor plans are approximate measurements only and are subject to government re-survey. Balconies are not to be enclosed except with a balcony screen which has been approved and complies with the Competent Authority's guidelines. The cost of screen and installation shall be borne by the purchaser. For an illustration of the approved balcony screen, please refer to Annex A of this brochure.

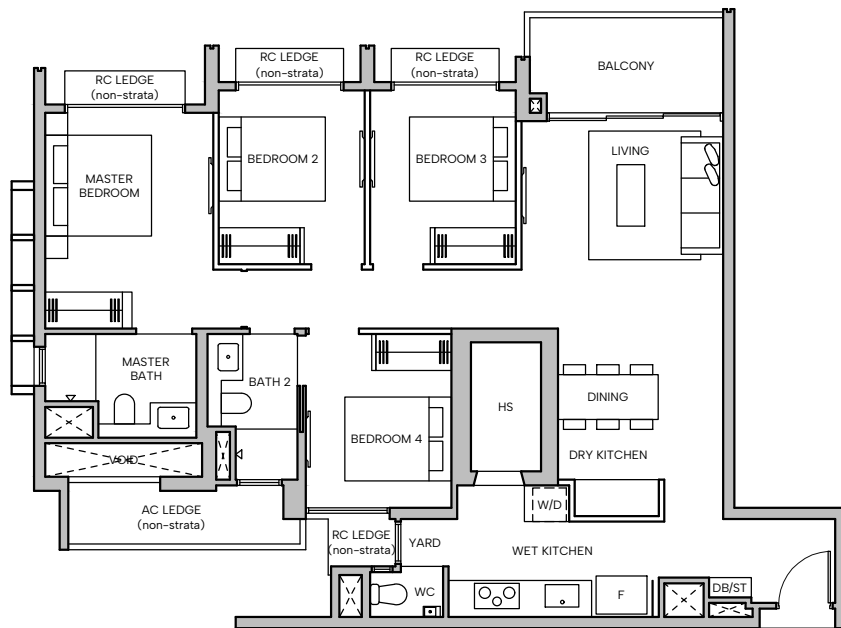
# 4 BEDROOM PREMIUM

UPDATED ON: 25 Mar 2026

## Type D1b

107 sqm (1152 sq ft)

Block 18 #02-07 to #14-07

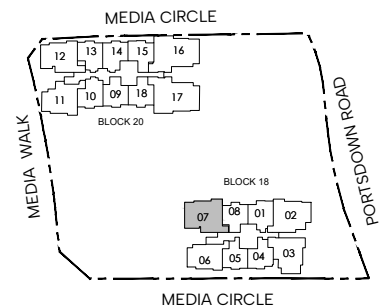


### LEGEND

F FRIDGE W/D WASHER CUM DRYER DB DISTRIBUTION BOARD ST STORE AC AIR-CONDITIONER  
 RC REINFORCED CONCRETE HS HOUSEHOLD SHELTER WC WATER CLOSET



SCALE



KEY PLAN  
NOT TO SCALE

DISCLAIMER: Area includes balcony where applicable, and excludes among others, the Air-Conditioner (AC) ledge, airwell, Reinforced Concrete (RC) Ledge and Services Voids. Please refer to the key plan for orientation. All floor plans are approximate measurements only and are subject to government re-survey. Balconies are not to be enclosed except with a balcony screen which has been approved and complies with the Competent Authority's guidelines. The cost of screen and installation shall be borne by the purchaser. For an illustration of the approved balcony screen, please refer to Annex A of this brochure.

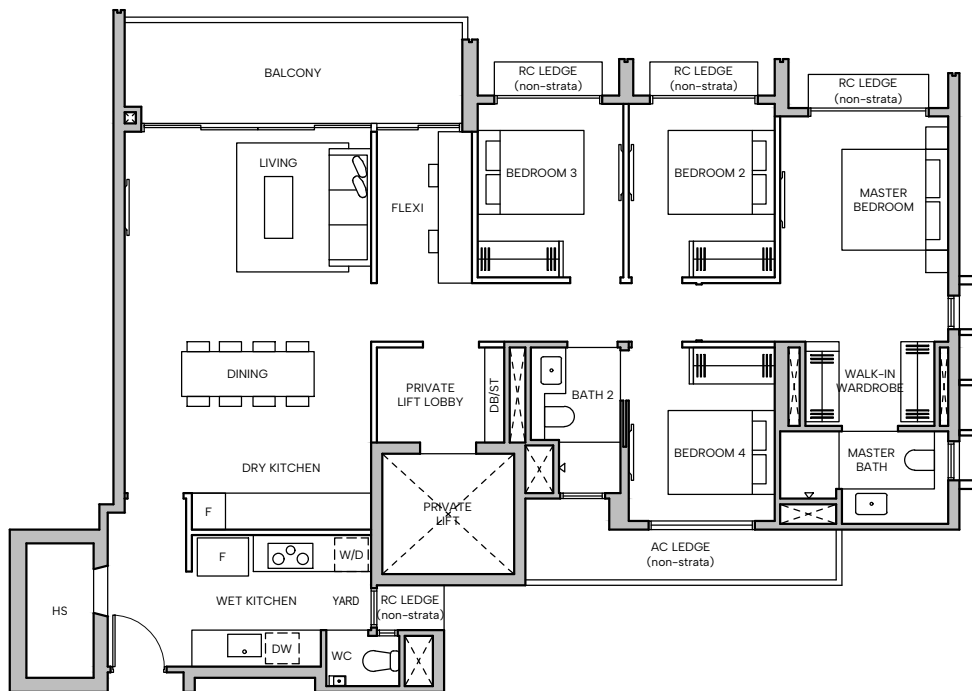
# 4 BEDROOM SUITE + FLEXI

UPDATED ON: 27 Mar 2026

## Type D2a

133 sqm (1432 sq ft)

Block 20 #02-16 to #22-16

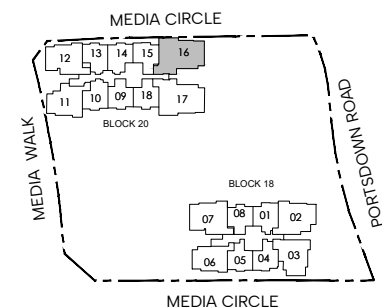


### LEGEND

F FRIDGE W/D WASHER CUM DRYER DB DISTRIBUTION BOARD ST STORE AC AIR-CONDITIONER  
 RC REINFORCED CONCRETE WC WATER CLOSET DW DISHWASHER



SCALE



KEY PLAN  
 NOT TO SCALE

DISCLAIMER: Area includes balcony where applicable, and excludes among others, the Air-Conditioner (AC) ledge, airwell, Reinforced Concrete (RC) Ledge and Services Voids. Please refer to the key plan for orientation. All floor plans are approximate measurements only and are subject to government re-survey. Balconies are not to be enclosed except with a balcony screen which has been approved and complies with the Competent Authority's guidelines. The cost of screen and installation shall be borne by the purchaser. For an illustration of the approved balcony screen, please refer to Annex A of this brochure.

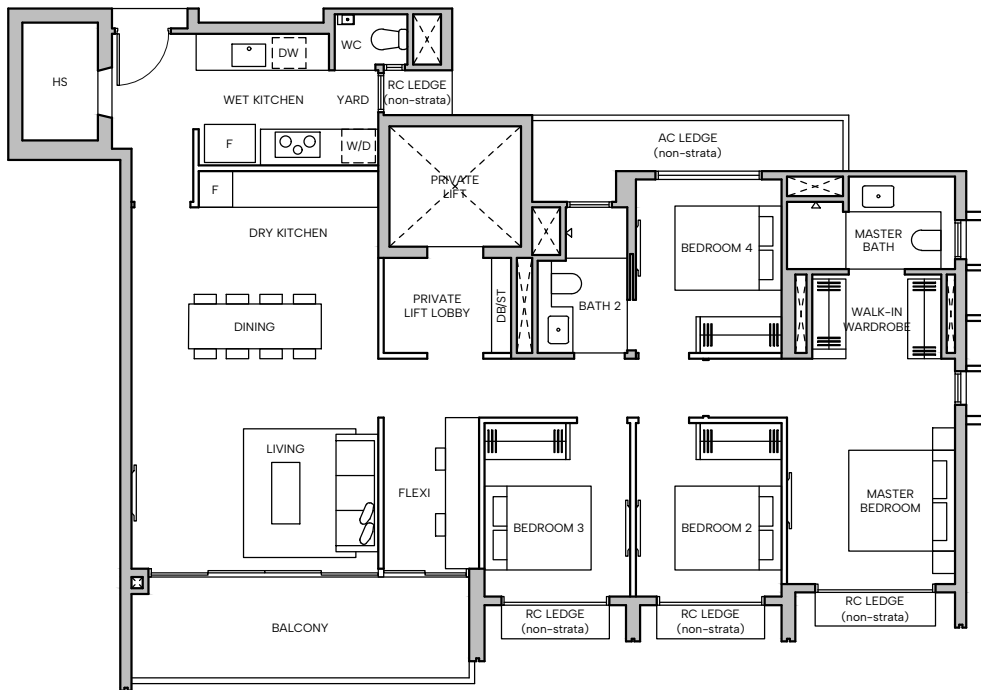
# 4 BEDROOM SUITE + FLEXI

UPDATED ON: 27 Mar 2026

## Type D2b

133 sqm (1432 sq ft)

Block 20 #02-17 to #22-17

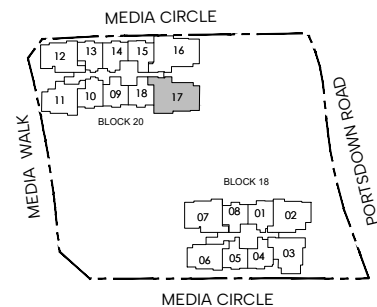


### LEGEND

F FRIDGE W/D WASHER CUM DRYER DB DISTRIBUTION BOARD ST STORE AC AIR-CONDITIONER  
 RC REINFORCED CONCRETE WC WATER CLOSET DW DISHWASHER



SCALE



KEY PLAN  
 NOT TO SCALE

DISCLAIMER: Area includes balcony where applicable, and excludes among others, the Air-Conditioner (AC) ledge, airwell, Reinforced Concrete (RC) Ledge and Services Voids. Please refer to the key plan for orientation. All floor plans are approximate measurements only and are subject to government re-survey. Balconies are not to be enclosed except with a balcony screen which has been approved and complies with the Competent Authority's guidelines. The cost of screen and installation shall be borne by the purchaser. For an illustration of the approved balcony screen, please refer to Annex A of this brochure.